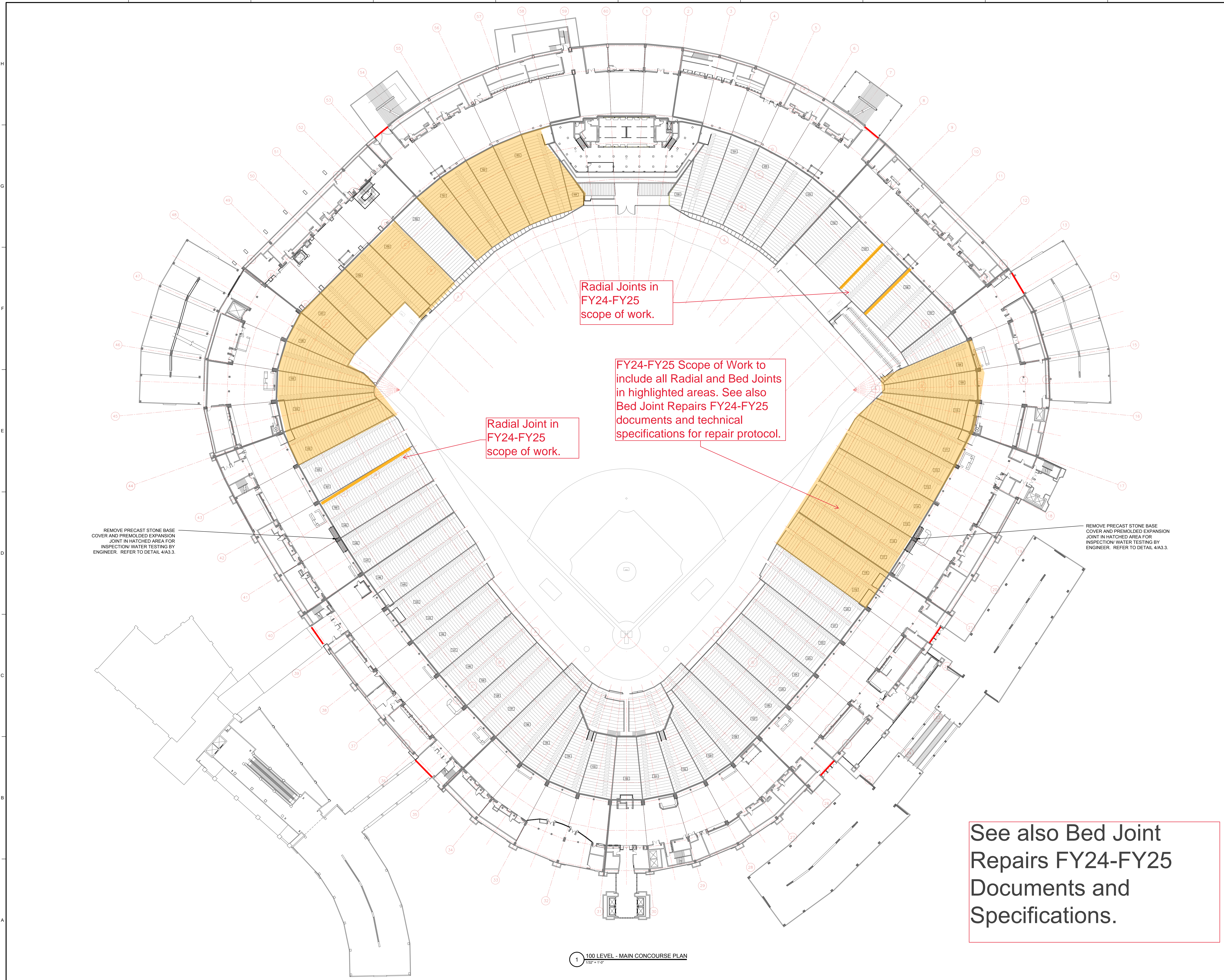


Plotted: 9/15/2014 7:49 PM by Fehrenbacher, Noah J. File Name: P:\2014\2014.5xxxx\2014.5106.0 - 2014-2015 REPAIR DOCUMENTS - US CELLULAR (JFD)000006 Drawings\Sheets\G-0.1 General Notes and Quantities.dwg

Copyright 2014. All rights reserved. No part of this document may be reproduced in any form or by any means without permission from Wiss, Janney, Elstner Associates, Inc. (WJE). WJE disclaims any responsibility for its unauthorized use.

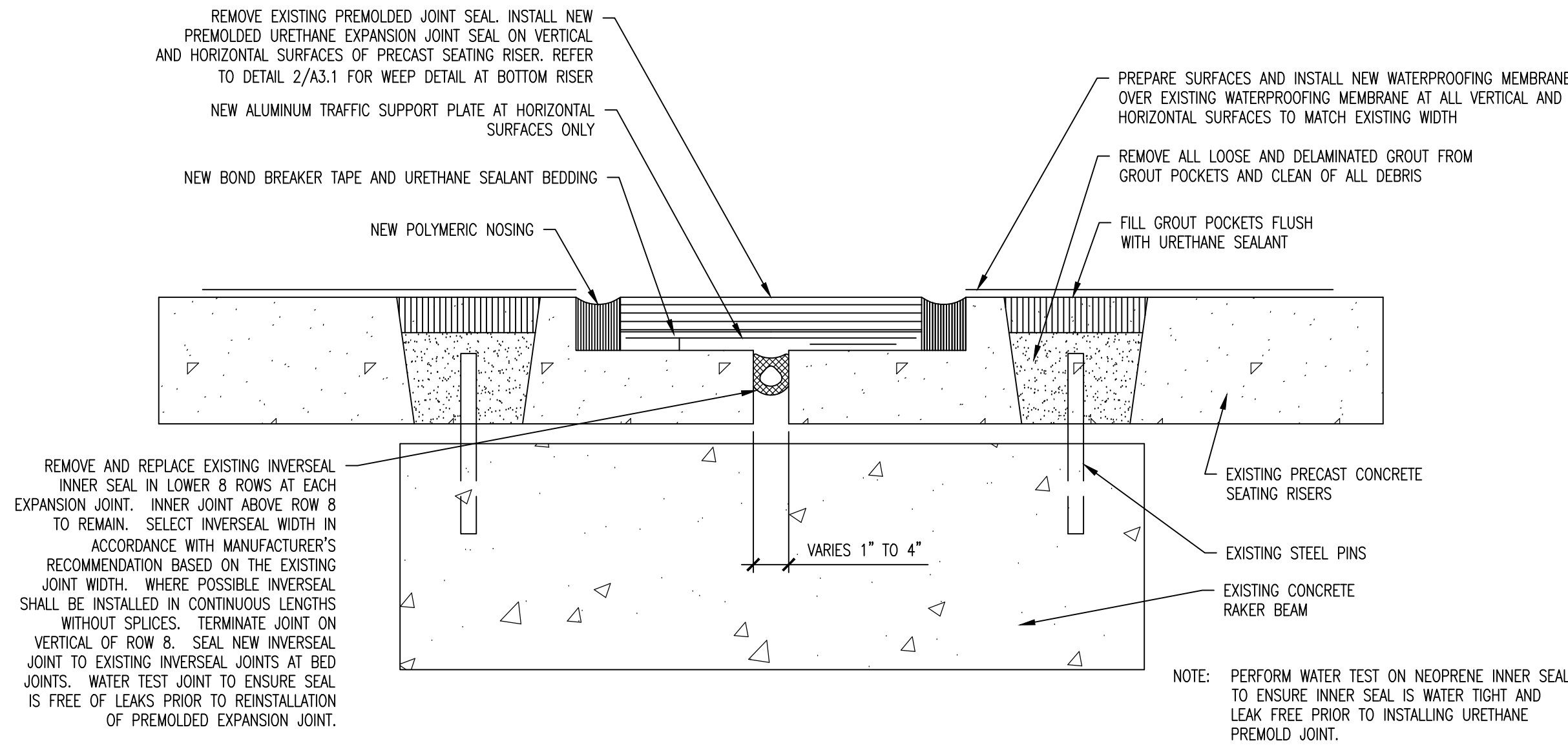
G0.1



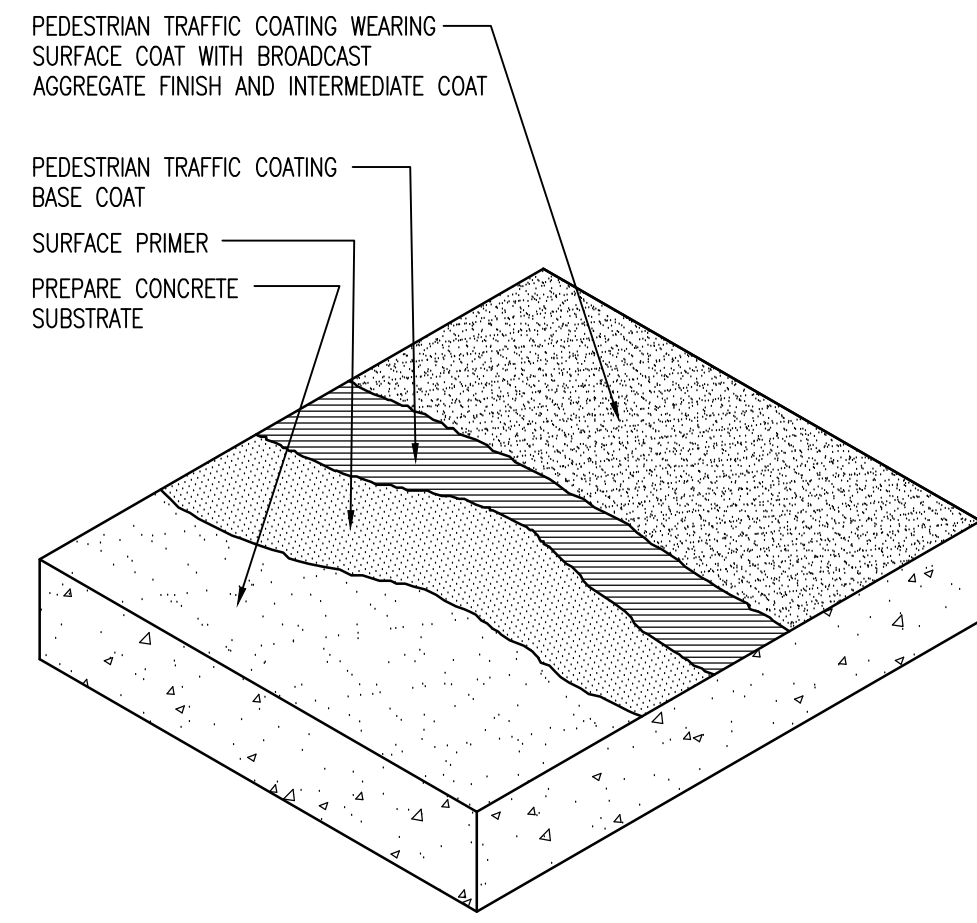
1 100 LEVEL - MAIN CONCOURSE PLAN
1/32" = 1'-0"

Printed: 9/15/2014 7:53 PM by: fchreibauer, Noah J. File Name: P:\2014\2014-XXXX\2014-5106-0 - 2014-2015 REPAIR DOCUMENTS - US CELLULAR (JFD)\06 Drawings\Sheet\A3.1_Details_Membrane.dwg

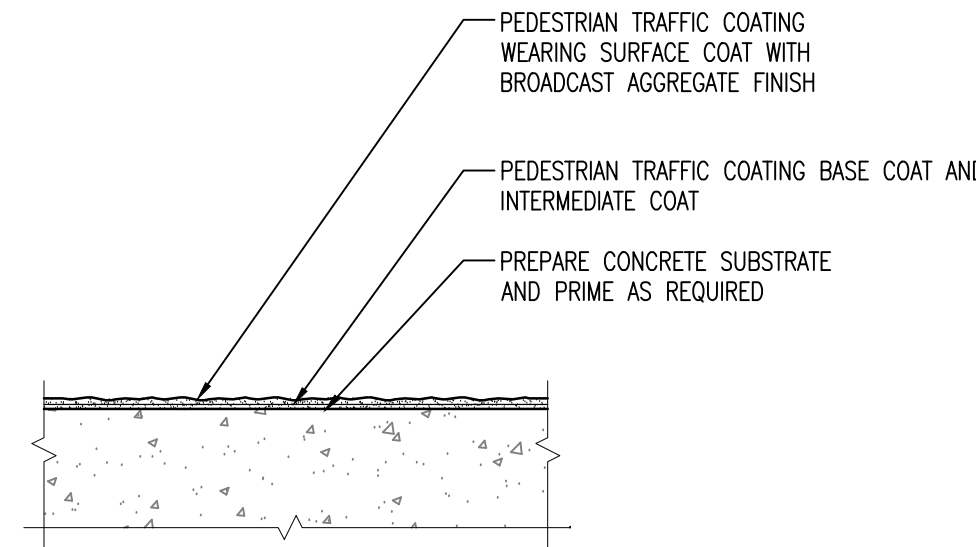
Copyright © 2014. All rights reserved. No part of this document may be reproduced in any form or by any means without permission from Wiss, Janney, Elstner Associates, Inc. (WJE). WJE disclaims any responsibility for its unauthorized use.



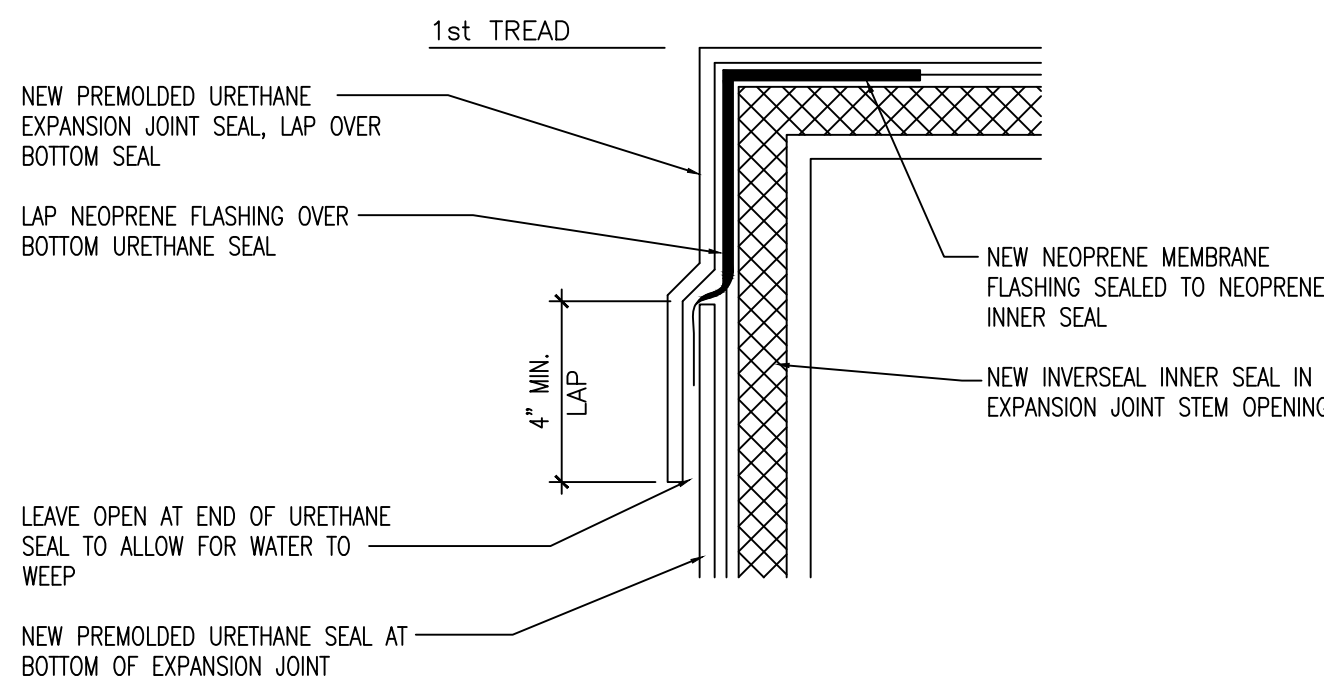
1 EXPANSION JOINT DETAIL (500 LEVEL SEATING BOWL)
3" = 1'-0"



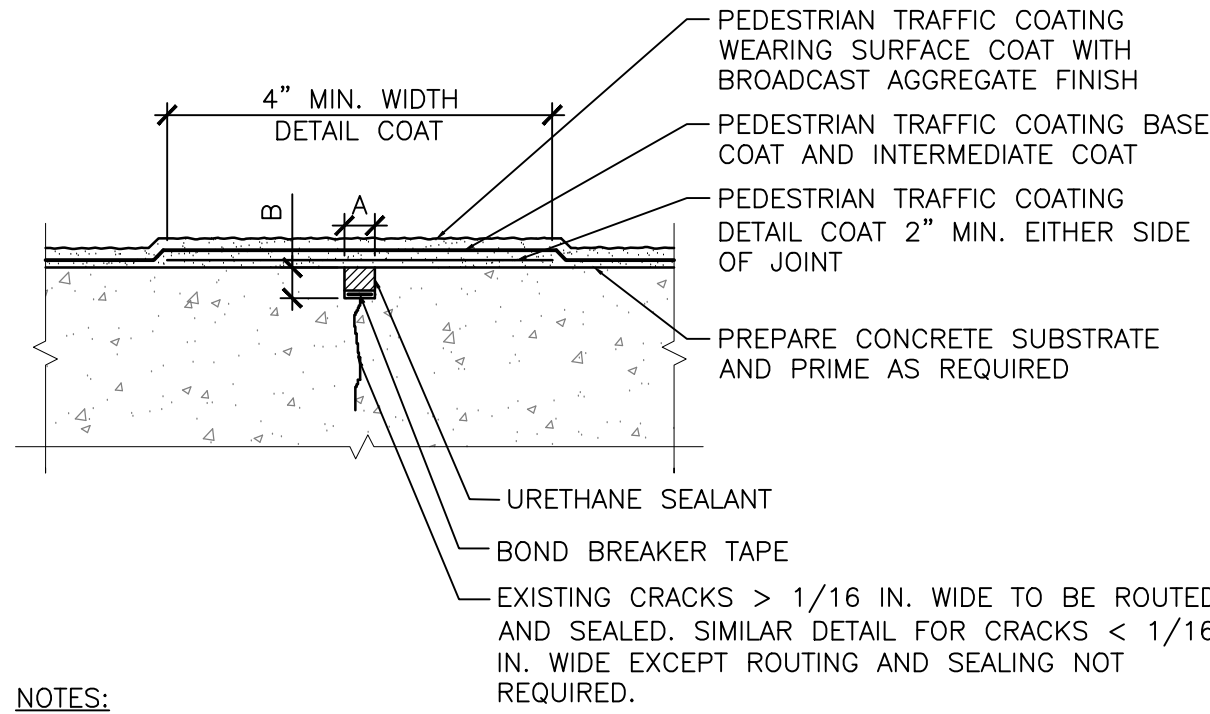
4 TYPICAL URETHANE MEMBRANE COATING DETAIL
1/2" = 1'-0"



5 TYPICAL URETHANE MEMBRANE ASSEMBLY
3" = 1'-0"



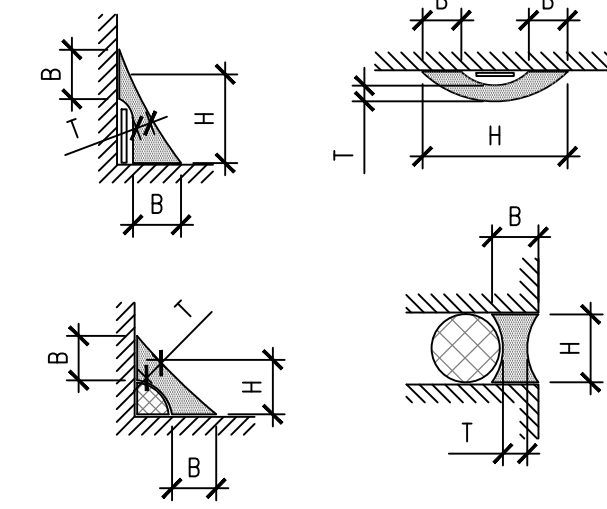
2 EXPANSION JOINT WEEP DETAIL
1 1/2" = 1'-0"



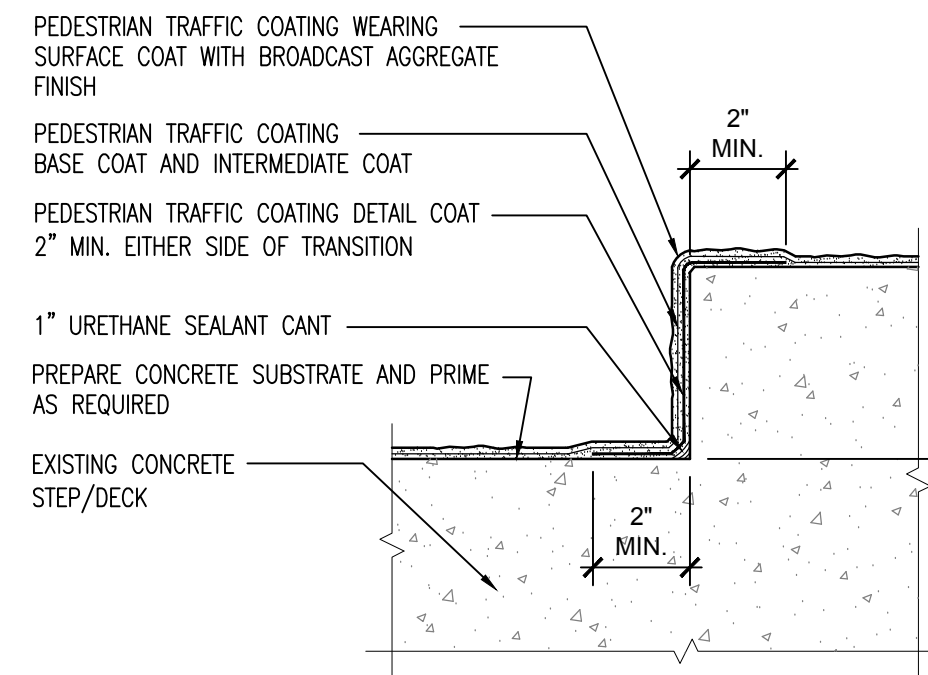
6 TYPICAL CRACK REPAIR
3" = 1'-0"

NOTES:
1. ROUT ALL EXISTING CRACKS USING GRINDER OR CRACK CHASER TO PROVIDE A SQUARE OR RECTANGULAR JOINT PROFILE.
2. DIMENSION 'A' SHALL BE NO LESS THAN 1/4 IN. AND NO GREATER THAN 1/2 IN.
3. DIMENSION 'B' SHALL BE EQUAL TO 3/8 IN.

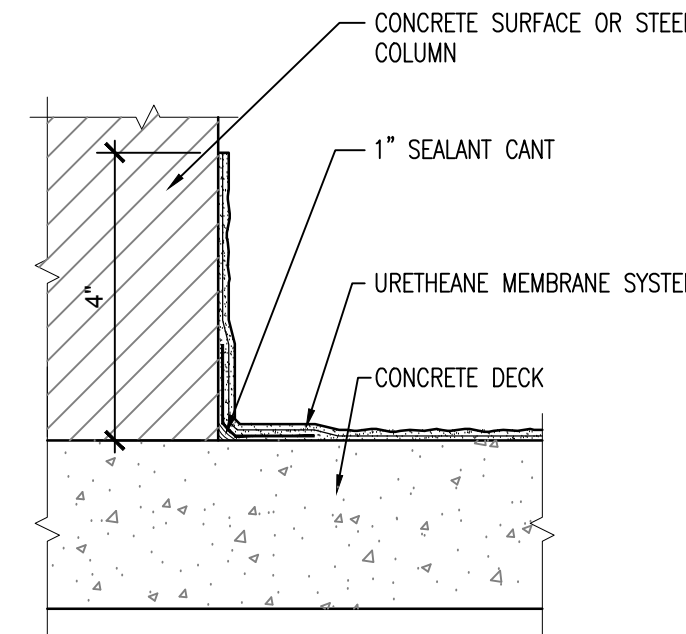
SEALANT CHART		
W	D	
1/4 IN.	1/4 IN.	
1/4 TO 1/2 IN.	1/4 IN.	
1/2 TO 1 IN.	W/2	
GREATER THAN 1 IN.	W/2	



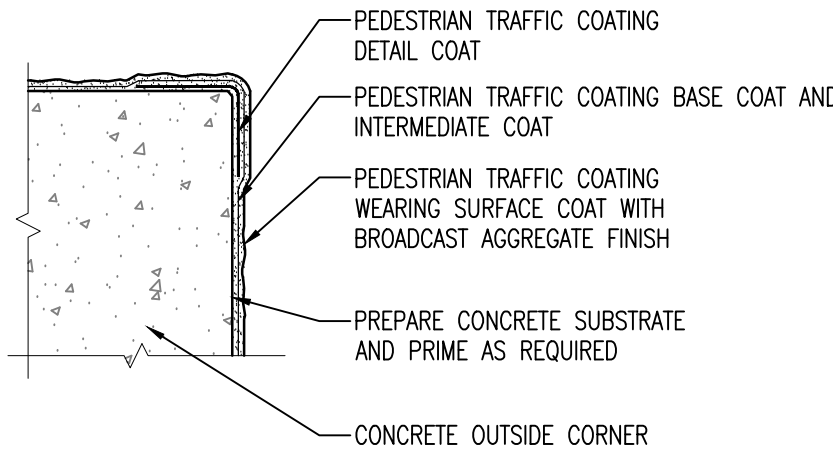
3 TYPICAL SEALANT JOINT PROFILES
1" = 1'-0"



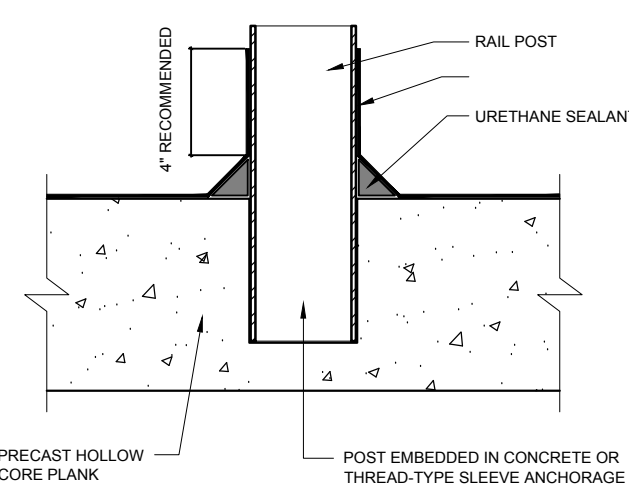
7 TYPICAL CONCRETE STEP DETAIL
3" = 1'-0"



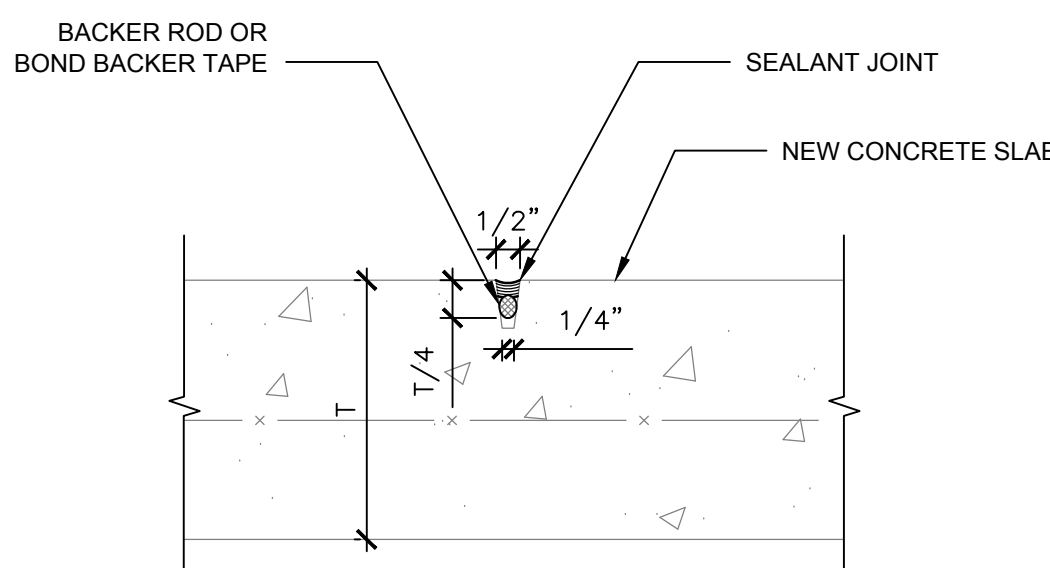
8 TYPICAL INSIDE CORNER DETAIL
3" = 1'-0"



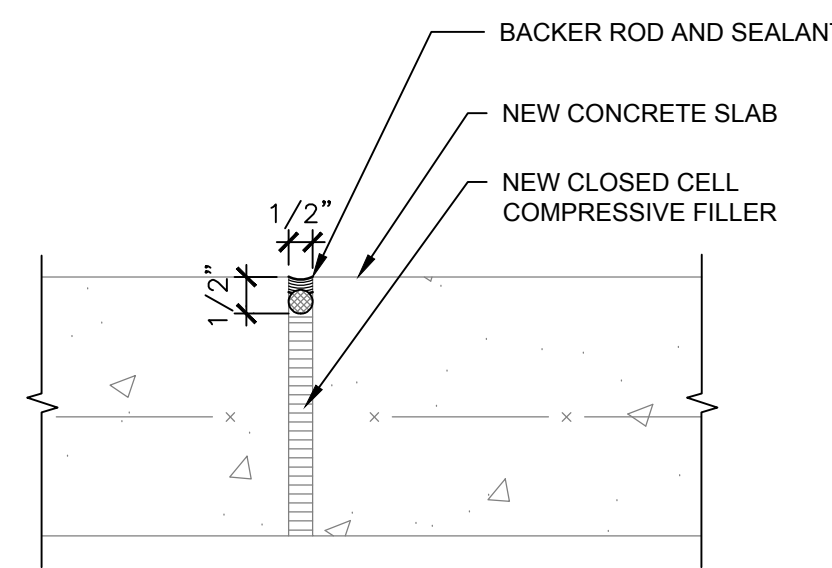
9 TYPICAL OUTSIDE CORNER DETAIL
3" = 1'-0"



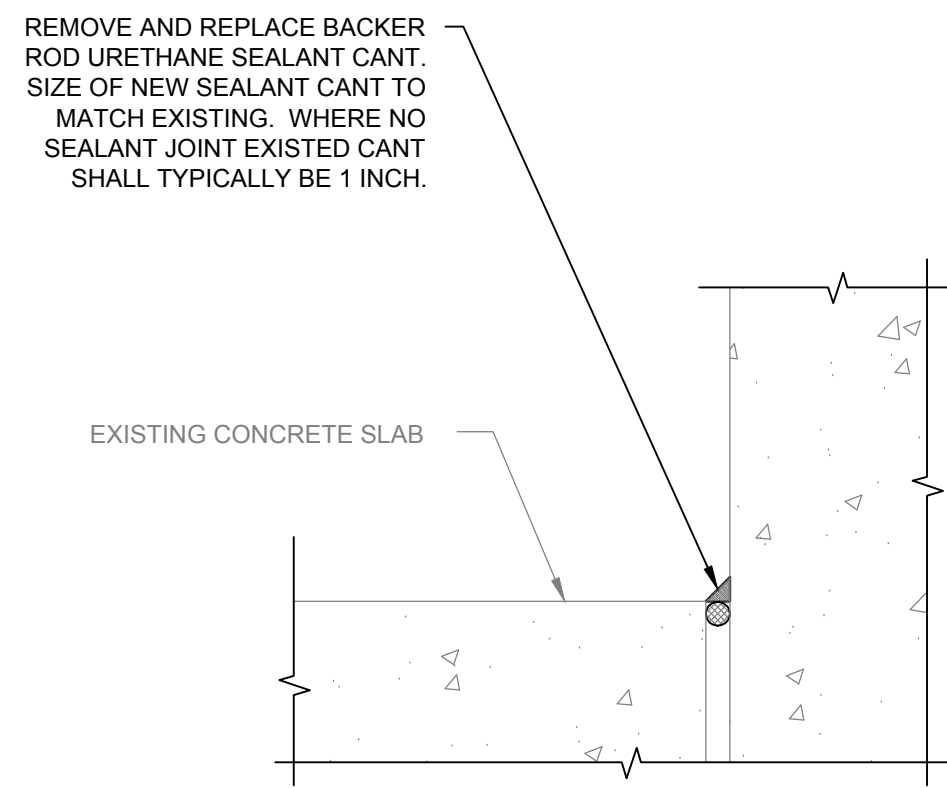
10 TYPICAL URETHANE MEMBRANE COATING DETAIL
1 1/2" = 1'-0"



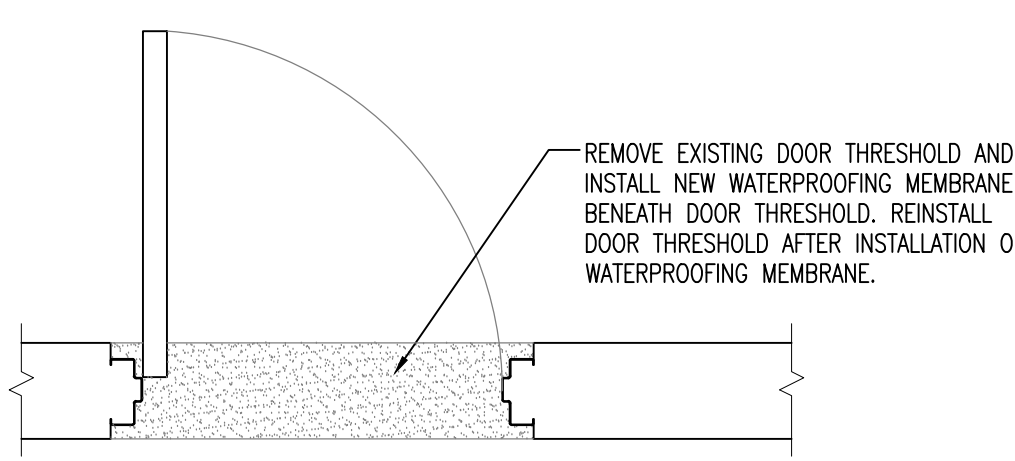
11 TYPICAL SLAB CONTROL JOINT
3" = 1'-0"



12 TYPICAL SLAB CONSTRUCTION JOINT
3" = 1'-0"



13 SEALANT COVE JOINT AT CONCOURSE OR EXTERIOR PERIMETER
3" = 1'-0"



14 URETHANE MEMBRANE AT DOOR THRESHOLD
3/4" = 1'-0"

WJE ENGINEERS
ARCHITECTS
MATERIALS SCIENTISTS

Wiss, Janney, Elstner Associates, Inc.
330 Pfingsten Road
Northbrook, Illinois 60062
847.272.7400 tel | 847.291.4813 fax
www.wje.com

Headquarters & Laboratories: Northbrook, Illinois
Atlanta | Austin | Boston | Chicago | Cleveland | Dallas | Denver | Detroit
Honolulu | Houston | Los Angeles | Minneapolis | New Haven | New York
Princeton | San Francisco | Seattle | Washington, D.C.

Consultants

Project
U.S. Cellular Field
2014/15 Concrete and
Waterproofing Repairs
333 West 35th Street
Chicago, Illinois 60616

Client
Illinois Sports Facilities
Authority (ISFA)
333 West 35th Street
Chicago, Illinois 60616

Issued for FY24-FY25
Project Scope
June 1, 2023



Project No. 2014.5106

Date September 15, 2014

Drawn DEK/NJF

Checked BRG/NJF

Scale As Shown

Expansion Joint and
Waterproofing
Membrane Details

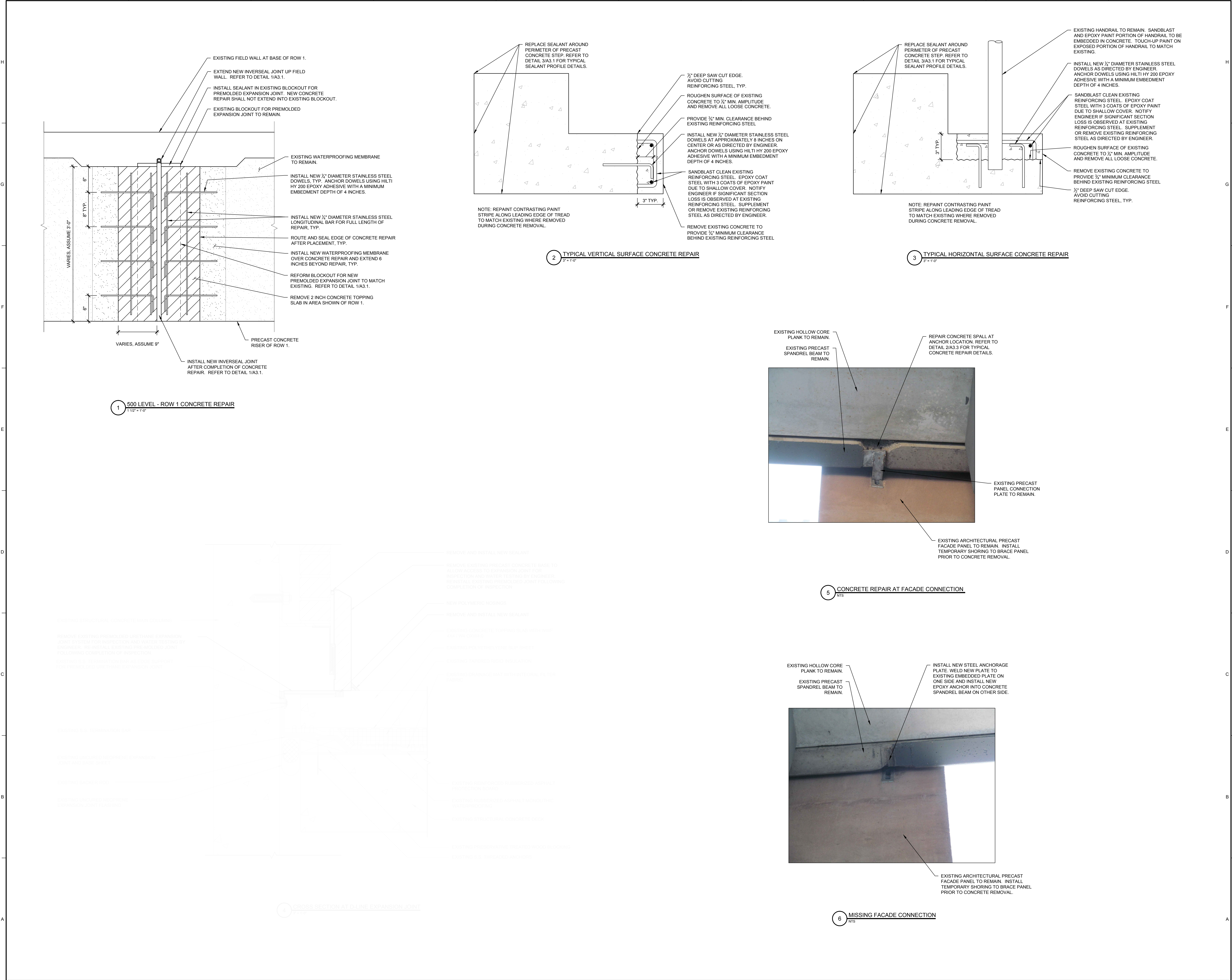
Sheet Title

Sheet No.

A3.1

Copyright 2014. All rights reserved. No part of this document may be reproduced in any form or by any means without permission from Wiss, Janney, Elstner Associates, Inc. (WJE). WJE disclaims any responsibility for its unauthorized use.

Printed: 9/15/2014 7:53 PM by fahrbauer, Noah J. File Name: P:\2014\2014-xxxx\2014-5106-0 - 2014-2015 REPAIR DOCUMENTS - US CELLULAR (JFD)06 Drawings\Sheet\A3.1_Detail_Concrete Repair.dwg

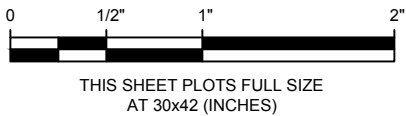


Consultants

Project
**U.S. Cellular Field
2014/15 Concrete and
Waterproofing Repairs**
333 West 35th Street
Chicago, Illinois 60616

Client
**Illinois Sports Facilities
Authority (ISFA)**
333 West 35th Street
Chicago, Illinois 60616

Issued for FY24-FY25
Project Scope
June 1, 2023



Project No.	2014.5106
Date	September 15, 2014
Drawn	DEK/NJF
Checked	BRG/NJF
Scale	As Shown

**Concrete Repair and
Miscellaneous Details**

Sheet Title

Sheet No. **A3.3**