



September 13, 2023

Elara Engineering
30 N Wolf Road, 2nd Floor
Hillside, Illinois 60162
708/236-0300

TO: PROSPECTIVE BIDDERS

**SUBJECT: ADDENDUM NO. 1 TO THE BIDDING DOCUMENTS FOR
GUARANTEED RATE FIELD
WASTE/VENT PIPING FY24**

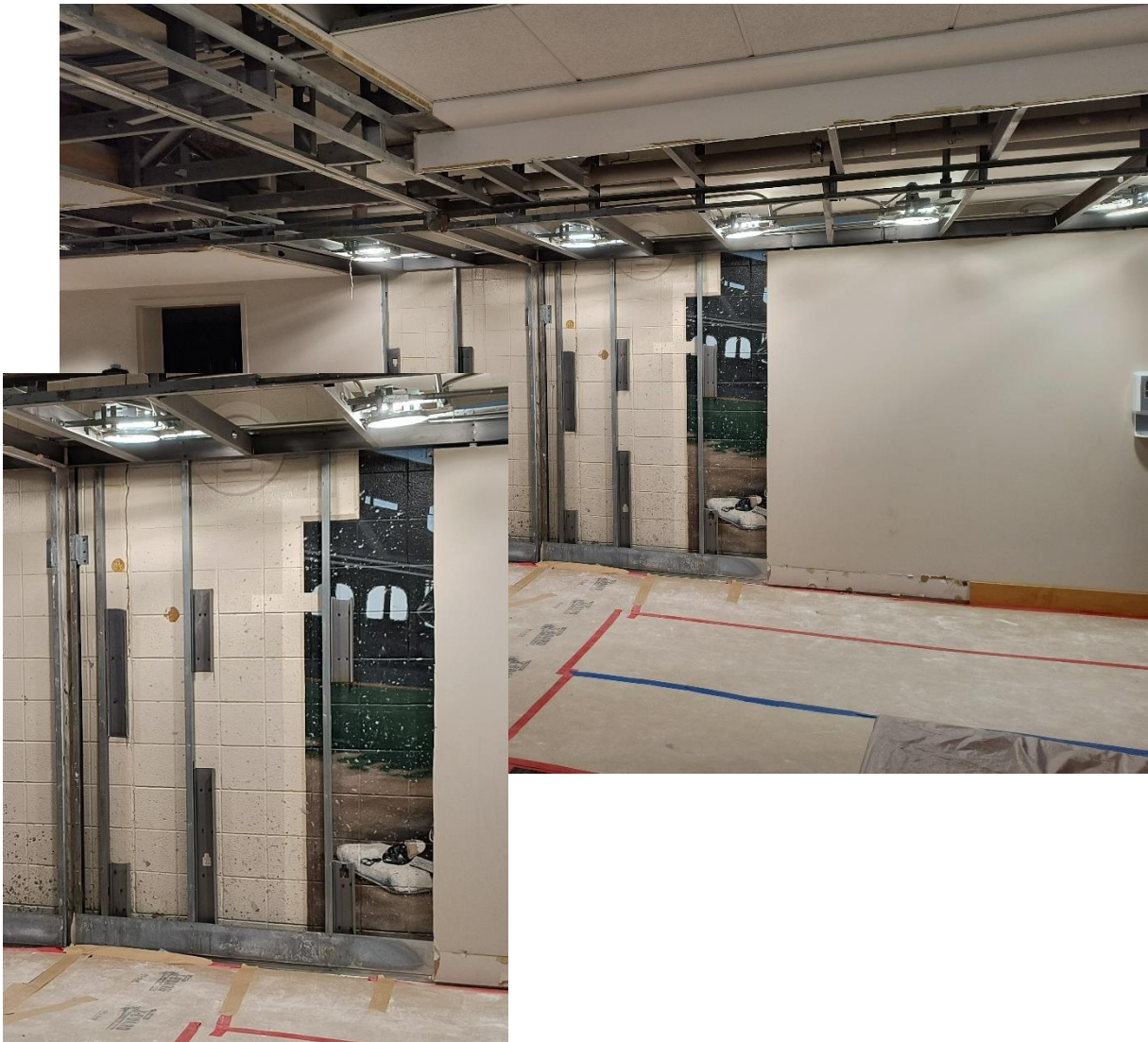
This addendum forms a part of the bidding and contract documents and modifies the original bidding documents, dated September 01, 2023. Acknowledge receipt of this addendum in space provided on Bid Form. FAILURE TO DO SO MAY SUBJECT BIDDER TO DISQUALIFICATION.

Summary of Changes are:

1. The Bid Form is updated to include wording for clarity and additional unit price values.

XLS file format is provided for those contractor's wishing to use form to electronically fill in the bid form sections A through D.
2. Sheet P00.001 is updated:
 - a. Abbreviation added.
 - b. Sheet List Table updated.
 - c. Variant documents from past projects included.
3. Sheets PD05.105 and P05.105 are updated to remove references to heat tracing; no heat tracing exists on that piping today to demolish or replace with new.
4. Sheets PD05.205, PD05.305, PD05.405, P05.205, P05.305, and P05.405 have note updated to reference water piping replacement inside the pipe chases and in walls opened for waste and vent piping replacement. This is for Riser #1 Replacement.
5. Sheets PD06.S06 through PD06.406, P06.S06 through P06.406, and P07.002 (all for Riser #2 Replacement scope) are complete now and part of the published set.
6. Sheets PD06.205, PD06.305, PD06.405, P06.205, P06.305, and P06.405 also include a note to reference water piping replacement inside the pipe chases and in walls opened for waste and vent piping replacement. This is for Riser #2 Replacement.
7. Sheet P07.001 is updated to remove references to heat tracing (see item 3 above).

8. Sheets P07.001 and P07.002 are updated to include existing water riser diagrams. For Riser #1 Replacement and Riser #2 Replacement scope, when the plumbing chase walls are opened, the water piping inside the walls shall be replaced. Additionally, the waste, vent, and water piping are attached to each other in the plumbing chase walls. Replace all water piping in the plumbing chase walls and to the floor above or below, so the plumbing chase walls do not need to be reopened to continue replacing water piping at floors above or below in the future.
9. Sheet P08.001 Detail 4 notes are updated to clarify scope and also better describes the epoxy lining scope.
10. Sheet P08.002 Details 6 through 8 are added.
11. Below are photos from the site regarding Women's 3.23.04, the corridor side wall is gypsum metal stud over CMU block wall. The interior toilet room side is also CMU block wall. Contractor to determine the most cost-effective wall for access to replace the plumbing piping and this chosen wall will be discussed during bid interviews.





Respectfully Submitted,

A handwritten signature in black ink, appearing to read "Chris Frauens".

Chris Frauens, P.E. (IL), CPD
Senior Plumbing/Fire Protection Engineer
Elara Energy Services, Inc.