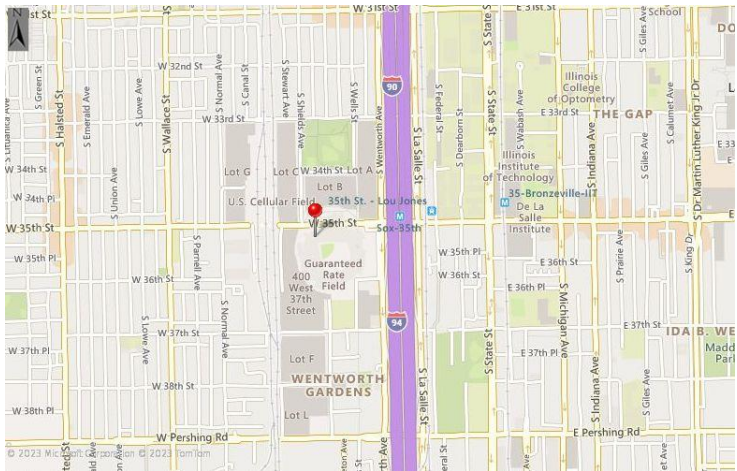


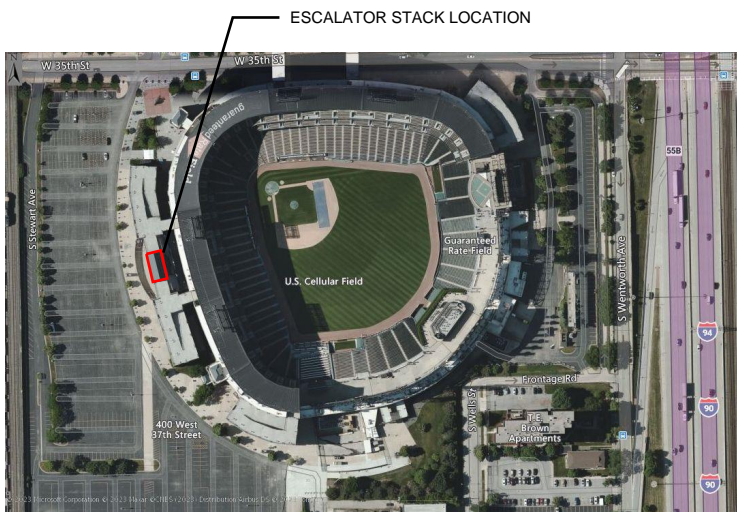
ILLINOIS SPORTS FACILITIES AUTHORITY  
GUARANTEED RATE FIELD

ESCALATOR CLADDING REPAIR GATE 3

333 W 35TH STREET, CHICAGO, IL 60616



1 VICINITY MAP  
N.T.S.



2 SITE MAP  
N.T.S.

SCOPE OF WORK

SCOPE OF WORK IS LIMITED TO THE REMOVAL AND REPLACEMENT OF ISOLATED STEEL SUPPORTS OF EXTERIOR ESCALATOR CLADDING.

FOR THIS PROJECT, CONTRACTOR IS RESPONSIBLE FOR ALL ITEMS NOT EXPLICITLY ADDRESSED HEREIN, OR SHALL PROCURE APPROPRIATE DESIGN PROFESSIONALS.

GENERAL NOTES

THE CONTRACTOR IS SOLELY RESPONSIBLE FOR SITE SAFETY INCLUDING ALL TEMPORARY PRECAUTIONARY MEASURES AND SAFETY PROGRAMS. SITE OBSERVATION VISITS BY THE SER DO NOT INCLUDE REVIEW OF THE CONTRACTOR'S SAFETY PRECAUTIONS.

EXISTING CONDITIONS

CONTRACTOR SHALL VERIFY ALL DIMENSIONS, ELEVATIONS, AND DETAILS OF THE EXISTING STRUCTURE WHERE THEY AFFECT THE NEW STRUCTURAL WORK. NOTIFY ARCHITECT AND SER IF THERE ARE ANY DEVIATIONS FROM THE CONTRACT DOCUMENTS.

CONTRACTOR SHALL FIELD VERIFY DIMENSIONS AND ELEVATIONS PRIOR TO FABRICATION OF STRUCTURAL MEMBERS.

REMOVE AND REPLACE EXISTING ARCHITECTURAL, ELECTRICAL, MECHANICAL, STRUCTURAL, CIVIL, OR MISCELLANEOUS ITEMS AS NECESSARY.

STRUCTURAL NOTES

UNLESS NOTED OTHERWISE ON THE PLANS AND/OR IN THE DETAILS, THESE NOTES SHALL APPLY. IF THERE ARE DISCREPANCIES BETWEEN THE PLANS/DETAILS AND THESE NOTES, THE CONTRACTOR MUST CONFORM TO THE MORE STRINGENT REQUIREMENTS, UNLESS CLARIFIED WITH THE STRUCTURAL ENGINEER OF RECORD (SER) PRIOR TO WORK.

COORDINATION - ARCHITECTURAL, CIVIL, MECHANICAL, AND ELECTRICAL ITEMS

CONTRACTOR SHALL VERIFY ALL DIMENSIONS AND CONDITIONS ON SITE WITH THE PLANS BEFORE CONSTRUCTION BEGINS. ALL DISCREPANCIES MUST BE REPORTED IMMEDIATELY.

LOCATION, DIMENSIONS AND DETAILS OF RECESSES, DEPRESSIONS, OPENINGS, AND EQUIPMENT SUPPORTS MUST BE VERIFIED BY REFERENCE TO ARCHITECTURAL, CIVIL, ELECTRICAL, AND MECHANICAL DRAWINGS.

DESIGN CODES

CHICAGO BUILDING CODE (2019)

MATERIAL STRENGTHS

STAINLESS STEEL

STAINLESS STEEL RECTANGULAR TUBE – ASTM A5554, 304 ALLOY, FY = 31 KSI  
STAINLESS STEEL ANGLE – ASTM A276-10, 304 ALLOY, FY = 31 KSI

SUBMITTAL NOTES

CONTRACTOR SHALL SUBMIT THE FOLLOWING ITEMS FOR ENGINEER REVIEW:

1. STAINLESS STEEL PRODUCT DATA
2. CONNECTION HARDWARE PRODUCT DATA



LERCH BATES INC.

328 S JEFFERSON STREET  
SUITE 760  
CHICAGO, IL 60661  
1-866-552-5246 (nationwide)  
312-635-4804 (tel)

www.lerchbates.com

GUARANTEED RATE FIELD  
ESCALATOR CLADDING  
REPAIR GATE 3  
333 W 35TH STREET  
CHICAGO, IL 60616

JOB No:  
R0100048695

TASK:  
310

ISSUE DATE:  
10/17/2023

DRAWN BY:  
ANK

CHECKED:  
TLO

DRAWING STATUS  
FOR CONSTRUCTION

REVISION HISTORY

#	DATE	NOTES
---	------	-------

TITLE SHEET,  
LOCATION MAP, AND  
GENERAL NOTES

SHEET No.  
T1

SHEET SIZE 11x17



LERCH BATES INC.

328 S JEFFERSON STREET  
SUITE 760  
CHICAGO, IL 60661  
1-866-552-5246 (nationwide)  
312-635-4804 (tel)

www.lerchbates.com

ESCALATOR CLADDING  
REPAIR GATE 3  
GUARANTEED RATE FIELD

333 W 35TH STREET  
CHICAGO, IL 60616

JOB No:  
R0100048695

TASK:  
310

ISSUE DATE:  
10/17/2023

DRAWN BY:  
ANK

CHECKED:  
TLO

DRAWING STATUS  
FOR CONSTRUCTION

REVISION HISTORY

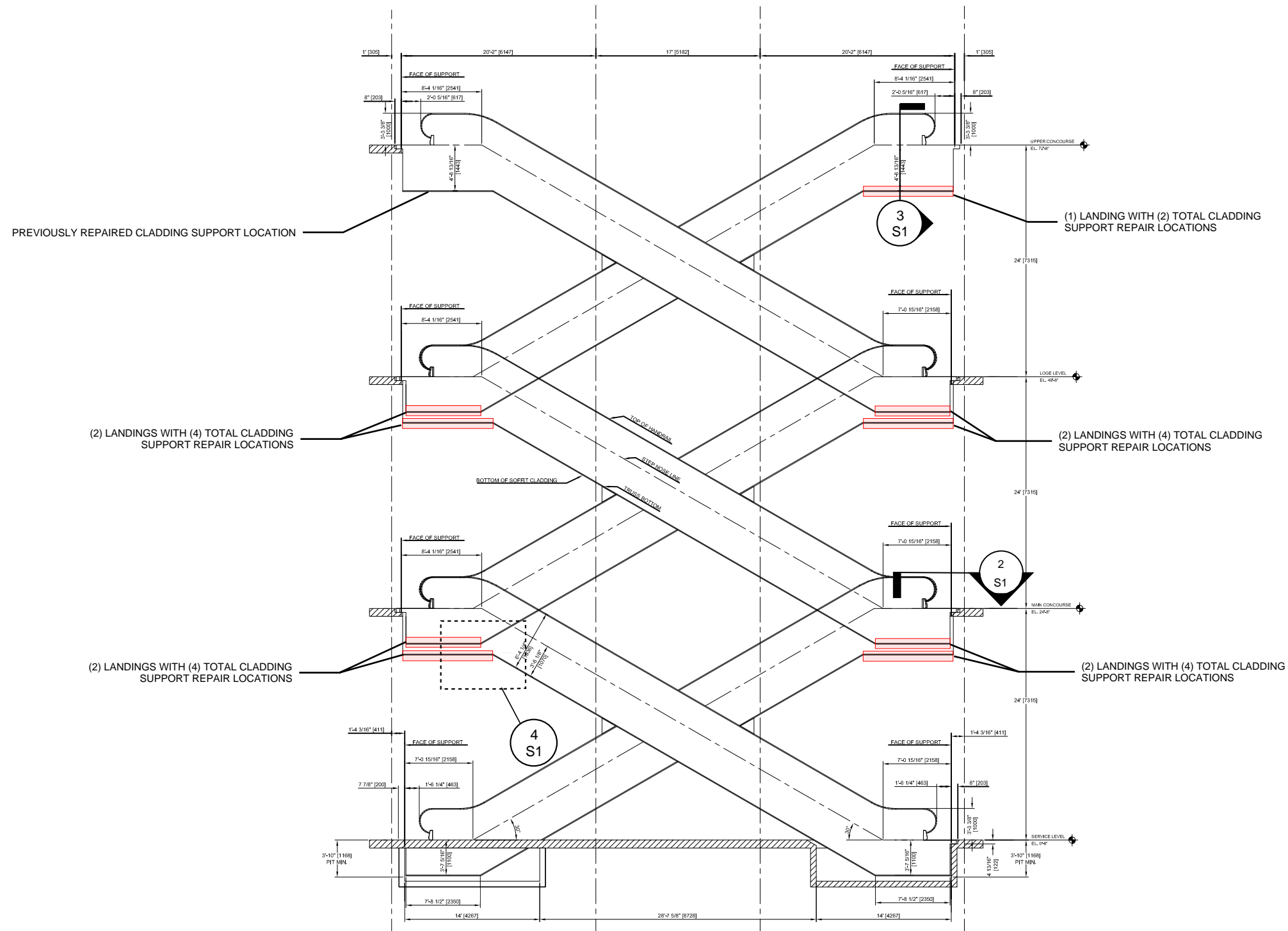
#	DATE	NOTES
---	------	-------

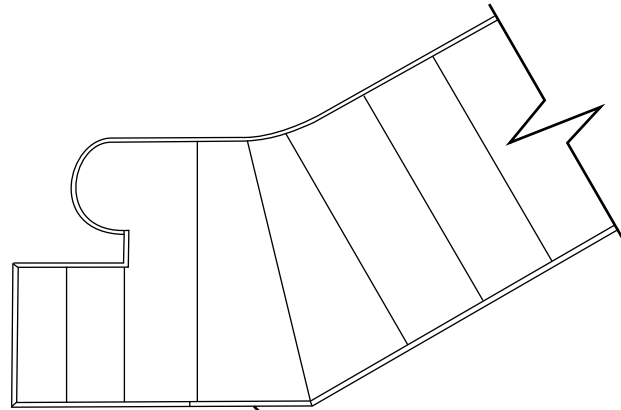
ESCALATOR  
LOCATION OVERVIEW

SHEET No

G1

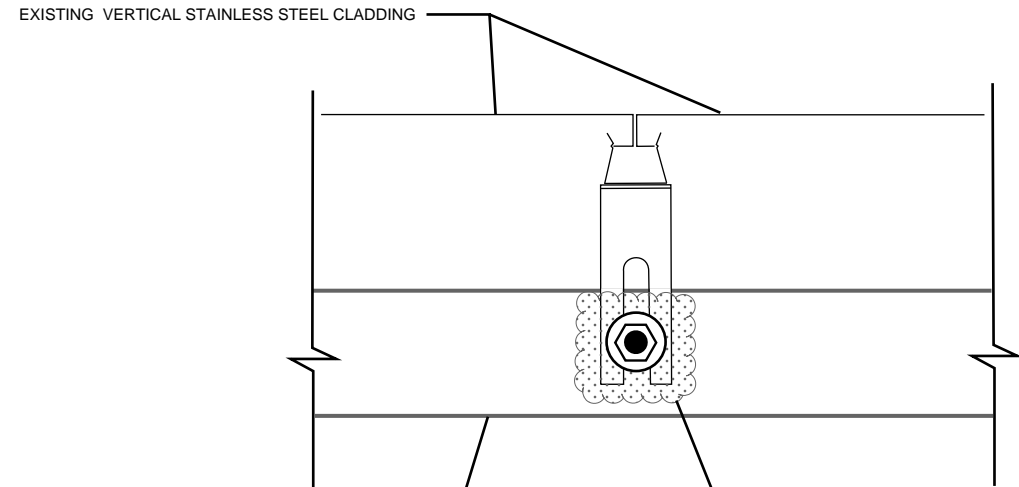
SHEET SIZE 11x17





1  
S1

TYPICAL ESCALATOR PANEL CONFIGURATION  
N.T.S.

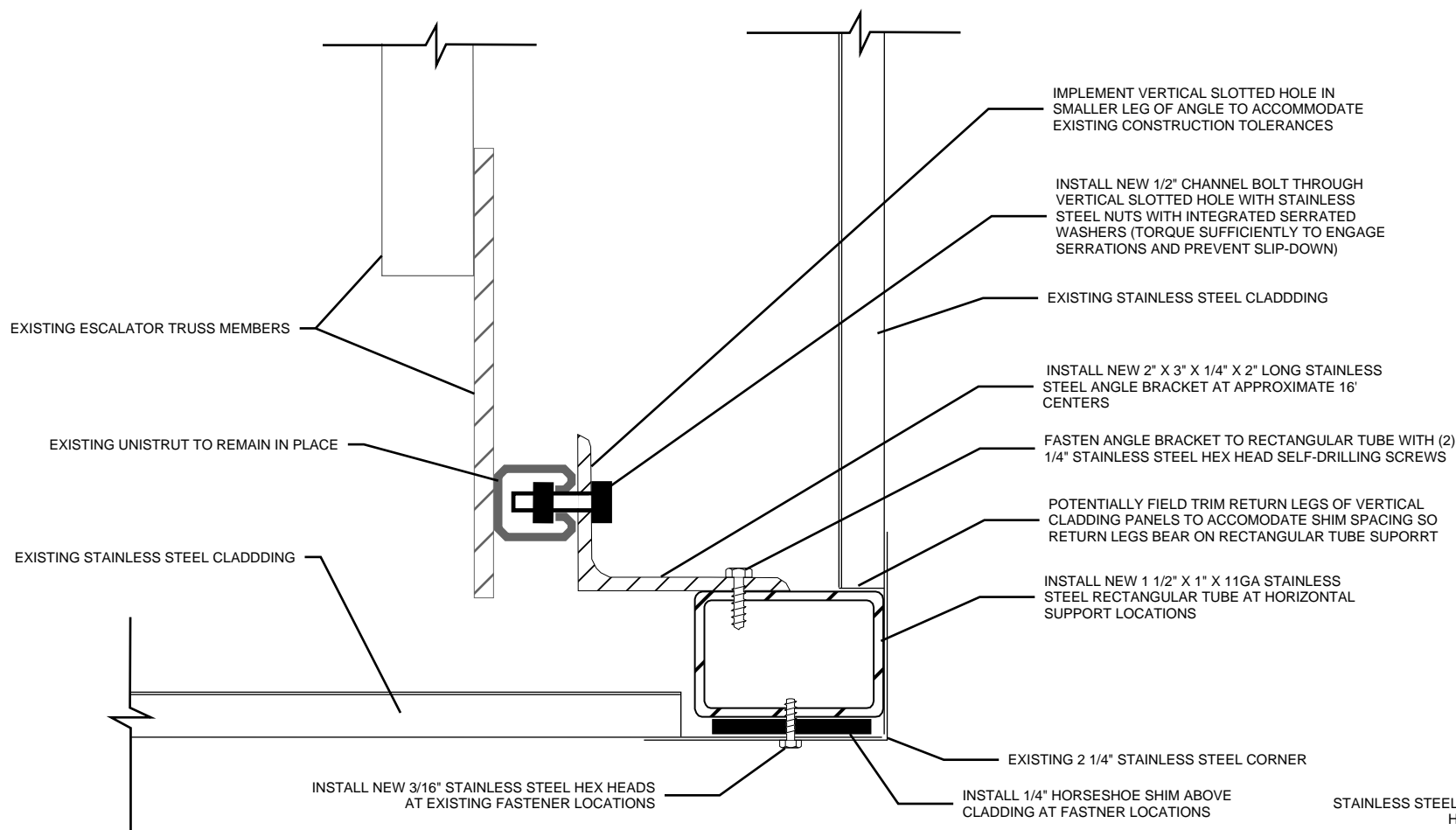


EXISTING UPPER PORTION OF ESCALATOR TRUSS FRAME THAT IS ACCESSED FROM REMOVAL OF INTERIOR CLADDING PANELS

REMOVE EXISTING ADHESIVE  
INSTALL 3/8" STAINLESS STEEL BOLT AND WASHER THROUGH EXISTING TRUSS FRAME ABOVE REPAIR LOCATIONS (APPROXIMATELY 2 PER REPAIR LOCATION)

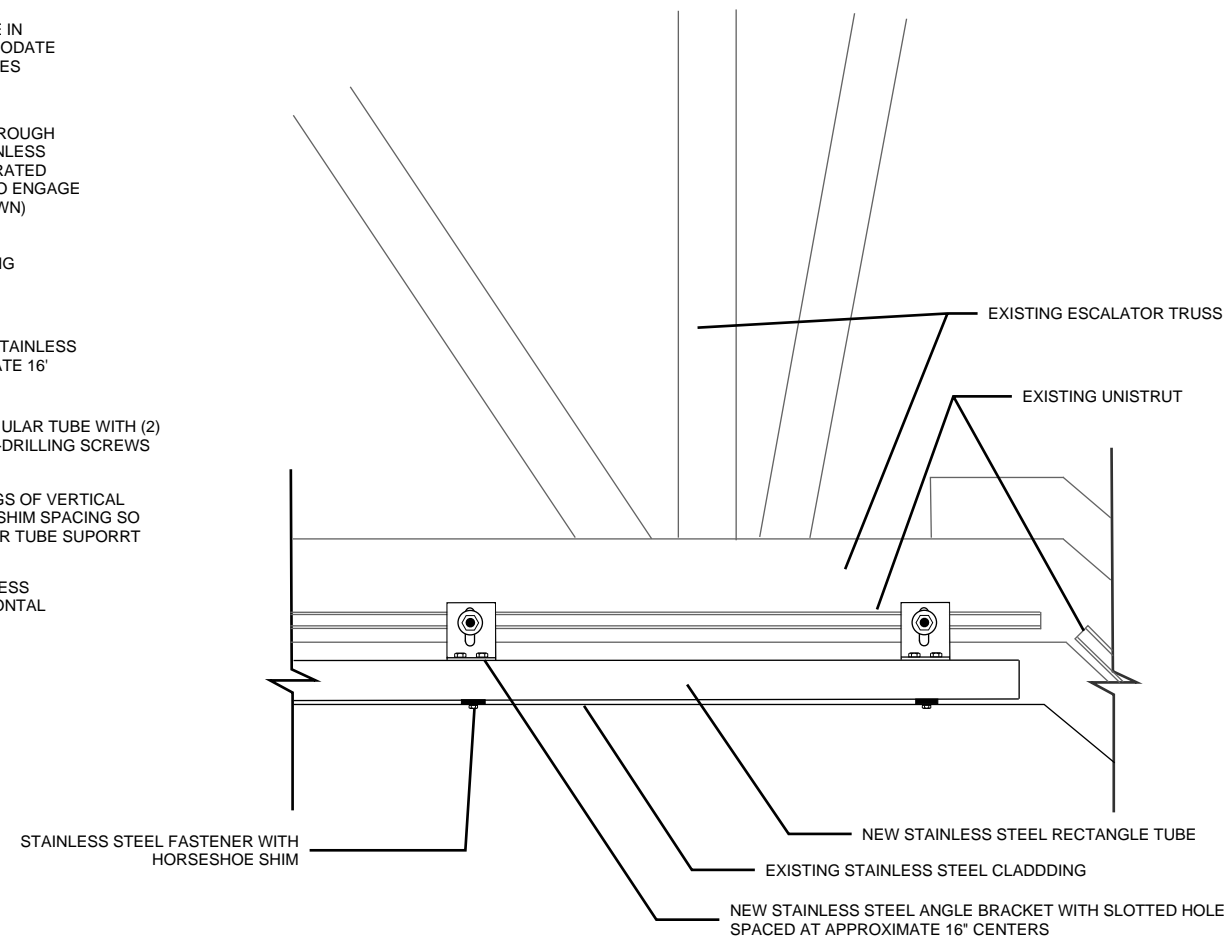
2  
S1

EXISTING CLADDING BRACKET FASTENING  
N.T.S.



3  
S1

CLADDING SUPPORT REPAIR CROSS-SECTION  
N.T.S.



4  
S1

SIDE VIEW OF CLADDING SUPPORT REPAIR  
N.T.S.



LERCH BATES INC.

328 S JEFFERSON STREET  
SUITE 760  
CHICAGO, IL 60661  
1-866-552-5246 (nationwide)  
312-635-4804 (tel)

www.lerchbates.com

ESCALATOR CLADDING  
REPAIR GATE 3  
GUARANTEED RATE FIELD

333 W 35TH STREET  
CHICAGO, IL 60616

JOB No:  
R0100048695

TASK:  
310

ISSUE DATE:  
10/17/2023

DRAWN BY:  
ANK

CHECKED:  
TLO

DRAWING STATUS  
FOR CONSTRUCTION

REVISION HISTORY

#	DATE	NOTES
---	------	-------

REPAIR DESIGN  
AND DETAILS

SHEET No.

S1

SHEET SIZE 11x17